



Leigh Academy  
**Marden**



# Prospectus

Ready | Respectful | Safe

# Leigh Academy Marden

is part of Leigh Academies Trust



Leigh Academies Trust is a medium sized multi-academy trust operating across Kent, Medway and South East London. It contains primary, secondary and special academies and is highly inclusive and successful. Our mission is to shape the lives of young people for the better through high quality education and in doing so, transform the communities in which they live.



## Our Values

### We care -

about our pupils through our human scale approach to education, our staff and their well-being and the communities that we serve, driven by our high ideals and strong moral values.

### We have boundless ambition -

to achieve excellence for all and create confident young adults with high levels of resilience and integrity.

### We work together -

as one team in the belief that we are greater than the sum of our parts. We foster an enterprising culture through collaboration and in close partnership with industry and other educators.

### We keep getting better -

using our 'can-do' attitude towards continuous improvement and innovation.

For admission enquiries telephone: 01622 831393

Or email: [info@marden.latrust.org.uk](mailto:info@marden.latrust.org.uk)



# Contents

Use our contents page to navigate your way through our prospectus

## Principal's Welcome

A message from Mrs H Penning

## Our ethos and values

An introduction to Marden's ethos

## The International Baccalaureate

About the Primary Years Programme (PYP)

## Our curriculum

Our intent, implementation and impact

## Our inclusive environment

Our SEND provision

## Wrap-around care

Our extended provision

## Our students as leaders

How our students get involved

## Further information

Useful links



# Welcome



## Ready Respectful Safe

Welcome to Leigh Academy Marden, a thriving and growing community based school which is at the heart of the village community.

We pride ourselves on delivering a broad and balanced curriculum, enriched through our after school clubs and co-curricular activities which are made accessible to all. As an IB World School, our curriculum provision is enhanced further through the International Baccalaureate Primary Years Programme (IB PYP). It is an aspirational high quality inquiry-led learning framework, where the National Curriculum is delivered through in-context experiences. Through the PYP, children are encouraged to be risk-takers, life-long learners and global citizens.

At Marden, we believe that every child deserves the right to a nurturing and caring community, where children feel safe and inspired to learn. We have a shared vision that is ambitious and promotes high expectations for all. Collectively challenging ourselves and one another, showing both support and resilience to continuously improve and achieve, in learning and in life is part of our daily practice.

We are beneficiaries of having such supportive and caring parents and carers, who share our vision of delivering ambitious, inclusive outcomes for our children and are undoubtedly our most important partners in ensuring we achieve such a high quality of education. Also integral to our successes, is the drive and support of Leigh Academies Trust. Belonging to a Trust means we are part of a hub of innovative educational providers with access to a wealth of information and practices rooted in current thinking and research.

Mrs H Penning  
Principal

# Our ethos

At Leigh Academy Marden, we believe every child deserves the right to a nurturing and caring community, whose shared vision is ambitious and uncompromising. With an internationally-minded approach, we collectively challenge ourselves and one another, showing both support and resilience to continuously improve and achieve, in learning and in life.

## Our values

At Leigh Academy Marden, we take pride in the following simple values to foster positive conduct:

Inquirers	Open-minded
Knowledgeable	Caring
Thinkers	Risk-takers
Communicators	Balanced
Principled	Reflective

We aim to create inquiring, lifelong learners who respect and care for the world they live in and all those who live in it. Our learners understand how they are connected to the world in order to take action to improve their own lives, and the lives of local and global communities, becoming global citizens themselves.



‘Leigh Academy Marden is a happy school where pupils immerse themselves in the life of the school and local community.’

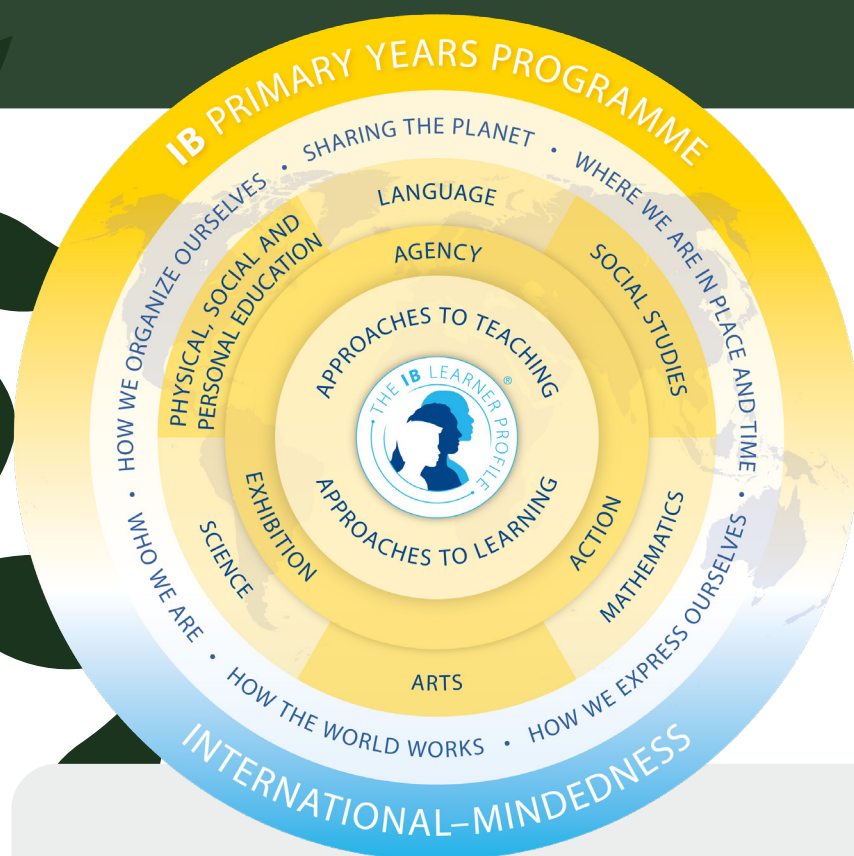
Ofsted, 2023

# The International Baccalaureate Primary Years Programme



The Primary Years Programme (PYP) is designed for pupils aged 3 to 12 and is one of four programmes offered by the International Baccalaureate Organisation (IBO).

© International  
Baccalaureate  
Organisation  
2024



The PYP focuses on the development of the whole child as an inquirer, both in the classroom and in the world outside. It is a framework guided by six transdisciplinary themes of global significance, explored using knowledge and skills derived from six subject areas, as well as transdisciplinary skills, with a powerful emphasis on inquiry.

The PYP is flexible enough to accommodate the demands of the National Curriculum as this is the curriculum that Leigh Academy Marden will follow. The PYP:

- Allows integrated development of cognitive and affective skills;
- Enables us to develop a curriculum appropriate to meet pupils learning needs;
- Develops autonomous and critical learners;
- Content is chosen by academies but is delivered within a concept driven curriculum to bring coherence across subjects; and
- Assessment drives learning and teaching positively.

Leigh Academy Marden is an IB World School for the Primary Years Programme. These are schools that share a common philosophy—a commitment to high quality, challenging, international education that Leigh Academy Marden believes is important for our students.

Find out more about the  
International Baccalaureate (IB)  
at [www.ibo.org](http://www.ibo.org)

# Our curriculum

## Intent

At Leigh Academy Marden, our aim is to constantly raise standards and expectations in all aspects of teaching and learning. We believe that only with outstanding teaching and learning, can we fully cater for the needs of the children in our care and help them reach their full potential. We believe in setting the highest expectations for all children irrespective of ability, gender, EAL and SEND.

Our method of subject leadership using the hub leadership framework ensures that children discover a love for discrete subjects whilst learning through a transdisciplinary approach.

Our curriculum develops children's intercultural understanding and respect, through an inquiry-based ideology. We go beyond the minimum expectations of the National Curriculum, providing opportunities to apply their knowledge and skills obtained, to bring about meaningful change in ourselves and others.

## Implementation

Our ambitious, challenging and contemporary curriculum exceeds the minimum expectations of the National Curriculum through the implementation of the IB PYP framework. Our children develop their knowledge and skills through a broad and balanced curriculum as National Curriculum objectives are interwoven into units of inquiry, with plentiful opportunities to apply this in context through lines of inquiry. Our curriculum is sequenced around the following six themes:

- Who we are
- How we express ourselves
- Where we are in place and time
- How the world works
- How we organise ourselves
- Sharing the planet



The way that we plan for this 21st century curriculum has collaboration at its core, working not only with colleagues at Leigh Academy Marden, but also with colleagues across Leigh Academies Trust. This enables us to draw on subject knowledge expertise from across our teaching and learning community.

Considered planning and robust assessment strategies ensure that all children make appropriate progress and master concepts. Rigorous monitoring of curriculum coverage and teaching will ensure that the challenge to deliver highly effective outcomes is ever-present. All teachers will undertake an active role in the development and deployment of our unified curriculum via our Hub Leadership framework, ensuring complete coverage and consistency across all year groups.

We develop maths mastery, using White Rose Maths. This builds a culture of deep understanding, confidence and competence in maths that produces strong, secure learning and progress. The framework provides consistency in teaching and learning as well as ensuring the complete coverage of all skills across all year groups.

Our children learn to read and write using a systematic synthetic phonics approach via Phonics International. They begin to explore meaning through Reading Rainbow and deepen their understanding and comprehension of texts through Vipers. This is all underpinned by a love of reading.

At Leigh Academy Marden, all children have opportunities to express their interests and talents through an extended curriculum offer, which includes: music; performing and visual arts; sporting competitions and languages.

Our children deliver meaningful change by establishing their own authentic action projects which are determined by the learning journey of each unit of inquiry.





## Curriculum impact

Evidenced through monitoring, observations and discussions with teachers and children, all children at Leigh Academy Marden will make effective progress. Outcomes for children will be in line with national expectations. The children will have the knowledge, skills, understanding and experiences needed to articulate their thinking across a broad and balanced curriculum.

As confident communicators, the children will be able to share their learning with wider audiences, including parents and the local community. Fundamentally, as a result of the curriculum implementation, all of the children will be ready for the next step in their educational journey as internationally-minded citizens.

Leaders have implemented a new and highly ambitious curriculum for all pupils. This includes pupils with special educational needs and/or disabilities (SEND), who access the same learning as their peers.

Ofsted, 2023





# Our inclusive environment

At Leigh Academy Marden, our intention for Special Educational Needs and/or Disabilities (SEND) is to ensure that all children receive a high-quality and ambitious education regardless of need or disability. We believe that it is vital that our pupils are equipped with the tools needed to become independent, inquisitive learners both in and out of the classroom. Through our high quality planning, teaching and provision we: Pride ourselves on early identification and intervention for SEND to ensure that progress and opportunities are maximised. Ensure that all children have access to a broad and balanced curriculum which is differentiated to enable children to understand the relevance and purpose of learning. Provide an accessible learning environment which is tailored to the individual needs of all pupils. Develop children's independence and life skills Regularly monitor the progress of children with SEND, using a child-centred approach. Provide good quality and relevant training for all staff members supporting children with SEND.

We work in partnership with parents and carers. We also work closely with external agencies and other professionals to hone and develop our provision for children with SEND.

Within Leigh Academy Marden, every teacher is a teacher of SEND. As such, inclusion is a thread that runs through every area of the school enhanced by collaboration between senior leaders, teachers, support staff, external agencies, parents and most importantly, the child.

## Wrap-around care

Leigh Academy Marden is pleased to be able to provide the children of our school the opportunity to attend Breakfast Club and Late Stay Club. These clubs may be attended on a regular or ad-hoc basis subject to availability.

This childcare provision is an extension of Leigh Academy Marden and therefore operates in line with the academy's ethos and values and high expectations of pupil behaviour. The wrap-around care staff have been appointed for their expertise in childcare and also have the necessary qualifications for safeguarding, behaviour management, first aid and food hygiene.

It is the wish of everyone involved to provide a happy and stimulating environment in which children are supported to reach their full potential. We believe that a positive partnership with parents and carers is crucial and promotes our aim to maximise the child's learning and ensure well being and well-rounded development.

'Pupils enjoy school. They work hard and take pride in their work. Learning is their priority, and they come to school ready to listen and engage. They know that it is okay to make mistakes as long as they learn from them.'

Ofsted, 2023

# Our pupils as leaders

There are a number of opportunities for our pupils to exercise their leadership skills and show commitment to roles throughout the school.

## House Captains:

Our school community is divided into four houses, named after different habitats. They are: Forest, Desert, Polar and Ocean. House Captains are voted in for each house and are expected to be proactive in leading initiatives and whole school competitions.

## Wellbeing Champions:

At Marden we believe that children's wellbeing is a priority. Our wellbeing champions are responsible for promoting wellbeing in school. They work together to create new ideas to support wellbeing in school. The children also choose a charity each term who they work together to fundraise for.

## Sports Leaders:

Some of our Year 6 children who have demonstrated that they are principled and good communicators are selected by staff to be Sports leaders. They are responsible for leading sports activities during lunchtimes for other children in the school.

## Eco Warriors:

Children in Year 5 and Year 6 are invited to participate as an Eco Warrior in school. They work together to promote ways to reduce energy and protect the environment. The group meets weekly to analyse the school's use of energy and to come up with ideas to reduce it.



‘The curriculum for personal development is a real strength. Pupils learn about important topics, including healthy relationships and finance, in an age-appropriate way. They develop an understanding of moral issues, such as the impact of fast fashion, through the ‘skills builder’ programme.’

Ofsted, 2023





# Further INFORMATION

Please visit our academy website

[Leigh Academy Marden](#)

Read our Ofsted report

[leighacademymarden.org.uk/ofsted-and-reports/](https://leighacademymarden.org.uk/ofsted-and-reports/)





Leigh Academy  
**Marden**

Goudhurst Road  
Marden  
Kent TN12 9JX

01622 831393  
[info@marden.latrust.org.uk](mailto:info@marden.latrust.org.uk)  
[leighacademymarden.org.uk](http://leighacademymarden.org.uk)

Ready | Respectful | Safe



Leigh Academies Trust  
Chief Executive: Simon Beamish BA (Hons) MSc PGCE NPQH NLE FCCT

Carnation Road, Strood, Rochester, Kent ME2 2SX  
01634 412200 | fax: 01634 412201  
[info@latrust.org.uk](mailto:info@latrust.org.uk) | [leighacademiestrust.org.uk](http://leighacademiestrust.org.uk)

Leigh Academies Trust is a registered company (company no 2336587) and an exempt charity.